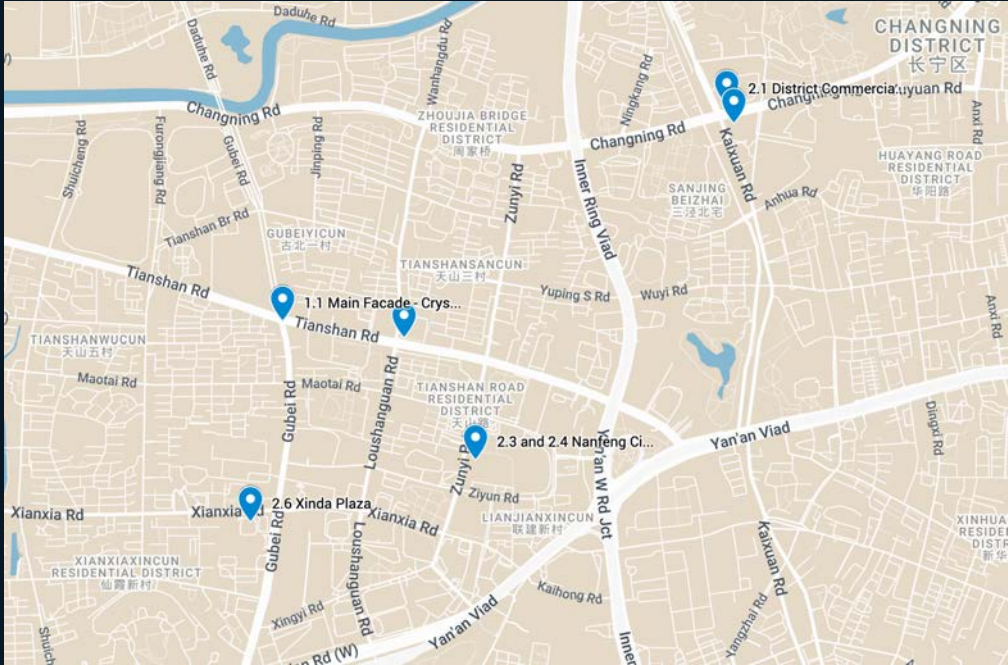


# Urban Digital Canvas Exhibition Sites



Shanghai International Light Festival  
24 September – 16 October 2026



# One Core | Main Venue: Crystal Bridge

The key performance area and main venue.



ONE CORE

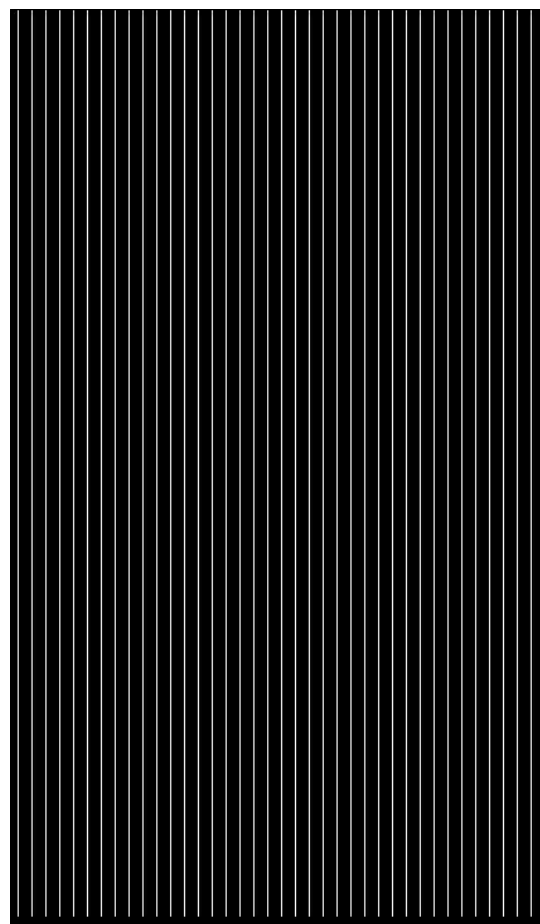
## Crystal Bridge

Tianshan Rd × Gubei Rd

- The key performance area and main venue.
- Newly built complex that will open in 2026 summer
- Using towers and public space as carriers, it hosts a layered light-and-shadow show around commerce, technology, fashion, ecology, and culture.



- Hardware Type: Embedded LED facade system

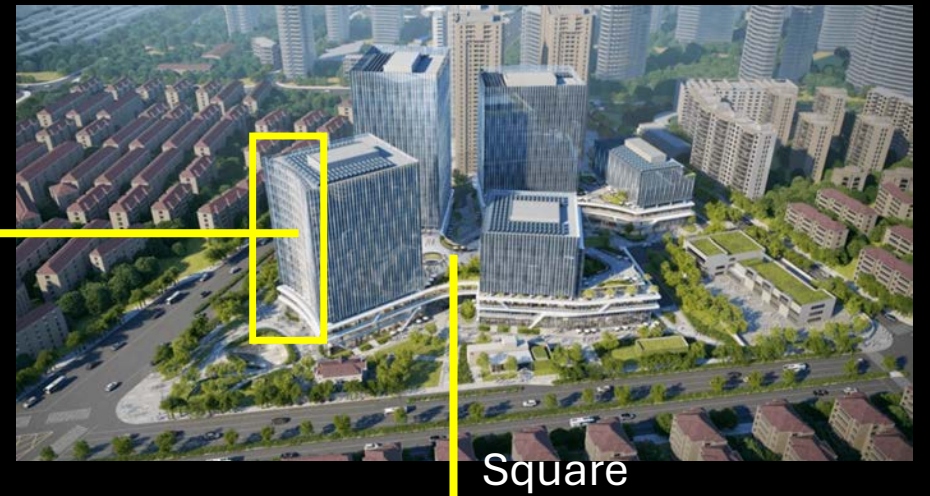


LED strip map

- Pixel: W430\*H730
- Format: MP4, AVI
- Codec: H.264
- Audio: not supported (silent video)

# Jingyao Hongqiao — Sunken Square Projection Zone

LED main  
Facade



# Jingyao Hongqiao — Sunken Square Projection Zone

Projection surfaces facing the sunken atrium square · Updated Jun 2026



Front View

## Venue & Equipment Conditions

### LOCATION

Jingyao Hongqiao Crystal Bridge — Sunken Square

### TOTAL SPAN (TOP)

~90 m

### CENTER BAY WIDTH

~36.4 m

### SIDE WING WIDTH (x2)

~26.8 m each

### LED PANEL HEIGHT

~8.76 m (4.38 m × 2 floors)

### SURFACE TYPE

LED glass curtain wall / facade  
faces inward toward square

### PROJECTOR SETUP

4 × HiteVision laser projectors

90M

26.8M

26.8M

# Projector Specifications — Sunken Square

HiteVision Laser Projector · 4-Unit Array

主要参数	投影技术	DLP™芯片×1		
	成像系统	0.8" DMD (16:10宽高比)		
	分辨率	1,920×1,200		
	光源技术	激光		
光源寿命*1	光源寿命*1	25,000小时 (标准) / 40,000小时 (节能)		
	对比度	6,000,000:1 (动态对比度)		
	亮度*2	6,600流明	7,600流明	
	变焦比	1.3×ZOOM		
投射比	投射比	1.2-1.56:1 (标准)		
	可选镜头: 0.58:1, 0.65:1, 0.75:1, 0.98-1.37:1			
图形图像	镜头调节	手动变焦、聚焦		
	BrilliantColor™ TM	支持极致色彩技术		
	黄金色轮技术	支持		
	镜头位移 (手动)*3	垂直±40%; 水平±15% (以标镜为据)		
输入端口	梯形校正	水平/垂直校正; 四角校正; 自动梯形校正		
	画面宽高比	16:10兼容/4:3/16:9/16:6		
	VGA IN	15针微型D-sub端子×2		
	AUDIO IN	音频输入 (mini 3.5mm端子)×1		
输出端口	HDMI IN	HDMI连接器×2		
	HDBaseT	无	HDBaseT×1	无
	VGA OUT	15针微型D-sub端子×1		
	AUDIO OUT	音频输出 (mini 3.5mm端子)×1		
控制端口	LAN	RJ-45插座×1		
	3D VESA	×1		
	USB接口	×1		
	Mini USB	×1		
整机属性	RS-232 IN	9针公D-sub端子×1		
	RS-232 OUT	9针公D-sub端子×1		
	外观颜色	白色	黑色	
	电源电压	AC100-240V@ 50/60 Hz		
净重	整机功率	≤340W	≤440W	
	待机功率	≤0.5W		
	工作噪音	38dB (标准) / 32dB (节能)		
	外型尺寸	440mm(W)×148mm(H)×358mm(D)		
净重	约9kg	约10kg		

说明:

\*1. 该数值为光源寿命的维护时间, 使用环境及状况的不同将影响光源的寿命。

\*2. 根据 ISO21118 标准: 该标准值代表量产时产品的平均值, 而产品的出厂最低值为标准值的80%。

\*3. 数值以标镜1.2-1.56:1投射比为据

※ 本网页中的内容以及规格参数均经仔细校对, 如发生变更的情况, 恕不另行通知。

※ 本网页中的图片及照片资料均为示意图, 请以实物为准。

江政胜

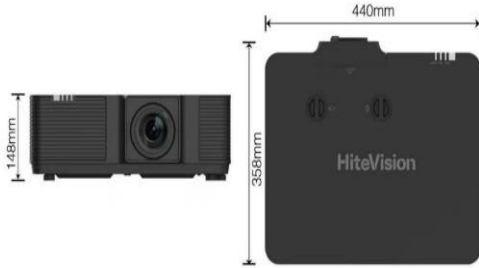
6600lm

江政胜

架体4套: 长4.5米\*宽1.2米\*高3.5米

江政胜

投影机参数



投影距离				
		标镜HT-M156M (1.2-1.56:1)		16:10宽高比
投影画面尺寸 (inch)	画面宽(m)	画面高(m)	最小投影距离 (m)	最大投影距离 (m)
60	1.292	0.808	1.551	2.016
80	1.723	1.077	2.068	2.688
100	2.154	1.346	2.585	3.360
120	2.585	1.615	3.102	4.032
150	3.231	2.019	3.877	5.040
180	3.877	2.423	4.653	6.048
200	4.308	2.692	5.169	6.720
240	5.169	3.231	6.203	8.064
260	5.600	3.500	6.720	8.736
300	6.462	4.039	7.754	10.080

※以上参数仅供参考, 建议不使用极限值。

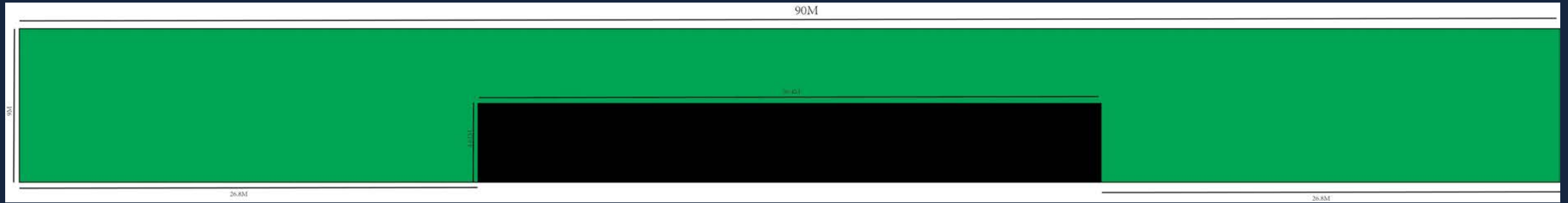
## KEY PROJECTOR SPECIFICATIONS

Technology	DLP™ Chip × 1
Imaging	0.8" DMD (16:10)
Resolution	1,920 × 1,200
Light Source	Laser
Lifespan	25,000 hrs (std) / 40,000 hrs (eco)
Contrast	6,000,000 : 1 (dynamic)
Brightness	6,600 lm / 7,600 lm peak
Zoom	1.3× ZOOM
Throw Ratio	1.2 – 1.56 : 1 (std lens)
Lens Shift	V ±40%, H ±15%
Keystone	H/V · 4-corner · Auto
Aspect Ratios	16:10 / 4:3 / 16:9 / 16:6
Unit Size	440 × 148 × 358 mm
Weight	~9 kg (W) / ~10 kg (B)
Frame/Unit	L 4.5m × W 1.2m × H 3.5m
Array	4-unit configuration

HiteVision projector datasheet + throw distance reference table (HT-M156M series)

# Sunken Square — Front View & Display Arrangement

Jingyao Hongqiao · 90 m glass curtain wall



## Display Arrangement

- 1. Overall timing** — runs nightly 18:30–21:30 on a 30-minute loop (a new cycle starts every 30 minutes).
- 2. Each 30-minute cycle contains:**
  - Part I** — 5 min primary mapping show, produced by the Changning government.
  - Part II** — 5–10 min DAC open-call works, right after the mapping show.
- 3. Rotation** — Open-call works can differ from cycle to cycle; no need to repeat the same works each round (exact plan subject to on-site technical support).

# Sunken Square — Artwork Format & Submission Requirements

*Open-call brief for the sunken-square projection*

## 01 · RESOLUTION

**9,000 × 900 px  
(suggested)**

or 12,000 × 1,200 px — single stitched 10:1 master.

## 02 · AUDIO

**Sound supported**

Works may include a synchronized soundtrack.

## 03 · FORMAT · CODEC

**MP4 · H.264 / H.265**

Same codec set as the district screens.

## 04 · CLIP LENGTH

**Within 5 min**

Suggested length per video clip.

# District Commercial Screens — On-Site Photos

Site photos of the eight district commercial screens



Longemont  
龙之梦



Shanghai Book City  
上海书城



Nanfeng City · Scr 1  
南丰城 1



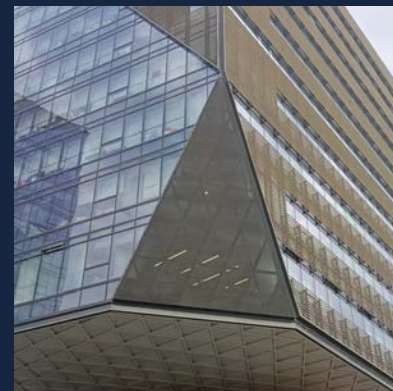
Nanfeng City · Scr 2  
南丰城 2



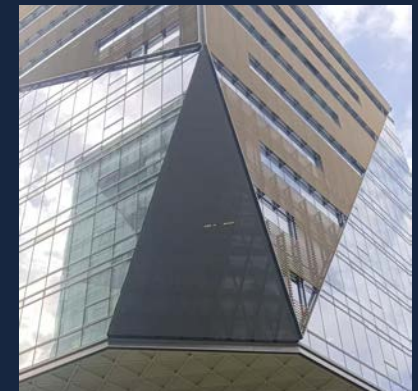
Huijin Department Store  
汇金百货



Xinda Plaza  
鑫达广场



Haisu Cultural Plaza 1  
海粟文化广场 1



Haisu Cultural Plaza 2  
海粟文化广场 2

# District Commercial Screens — Part 1 of 2

ADJUSTABLE? — “Flexible” means the playback time-slot / frequency can be adjusted after coordinating with the venue.



Sound NOT supported — submit silent videos

SCREEN	RESOLUTION	SIZE	FORMAT · CODEC	PER CLIP LENGTH	SPECIAL REQ.	HOURS	PLAYS / DAY	ADJUSTABLE? (slot / freq)
 <p><b>Longemont 龙之梦</b> 1018 Changning Rd</p>	Left 2496 × 1984 Right 1024 × 1984	L ≤ 22m H ≤ 10.5m	MP4 · H.264	Minimum 15s (30/45/60s also allowed)	Separate L / R versions	09:00 – 22:00	3,120	Flexible
 <p><b>Shanghai Book City 上海书城</b> 1057 Changning Rd</p>	2048 × 1664	L ≤ 12.5m H ≤ 10.8m	MP4 / JPG H.264	15–30s Suggested	30 fps;  Playback Time Slot: 15-30s: all day; 30–60s: hourly; 60s+: open/mid/close	07:30 – 22:00	All-day (15–30s)	No
 <p><b>Nanfeng City · Scr 1 南丰城1</b> 100 Zunyi Rd</p>	2000 × 1040 px	L ≤ 15.1m H ≤ 5.2m	MP4/MOV/JPG H.264/H.265	Flexible	File ≤ 50 MB	10:00 – 22:00	25	Flexible
 <p><b>Nanfeng City · Scr 2 南丰城2</b> 100 Zunyi Rd</p>	3,100 × 1,000 px	—	MP4/MOV/JPG H.264/H.265	Flexible	File ≤ 50 MB	10:00 – 22:00	25	Flexible

# District Commercial Screens — Part 2 of 2

Sound NOT supported — submit silent videos

ADJUSTABLE? — “Flexible” means the playback time-slot / frequency can be adjusted after coordinating with the venue.

SCREEN	RESOLUTION	SIZE	FORMAT · CODEC	PER CLIP LENGTH	SPECIAL REQ.	HOURS	PLAYS / DAY	ADJUSTABLE? (slot / freq)
5  Huijin Department Store 汇金百货 900 Tianshan Rd	1216 × 496	L ≤ 19.5m H ≤ 7.9m	MP4 · H.264	≤ 30s (15s best)	30 fps bitrate ≈ 12 Mbps	09:30 – 21:30	≥ 60	Flexible
6  Xinda Plaza 鑫达广场 320 Xianxia Rd	3840 × 2160	—	MP4 H.264/H.265/MPEG4	15s	fps ≤ 25 bitrate ≤ 15 Mbps file ≤ 1 GB	07:30 – 21:00	1,080	Flexible